

# 03 - Sending a Job to the Laser Cutter

Describes how to download a job from RDWorks to the machine.

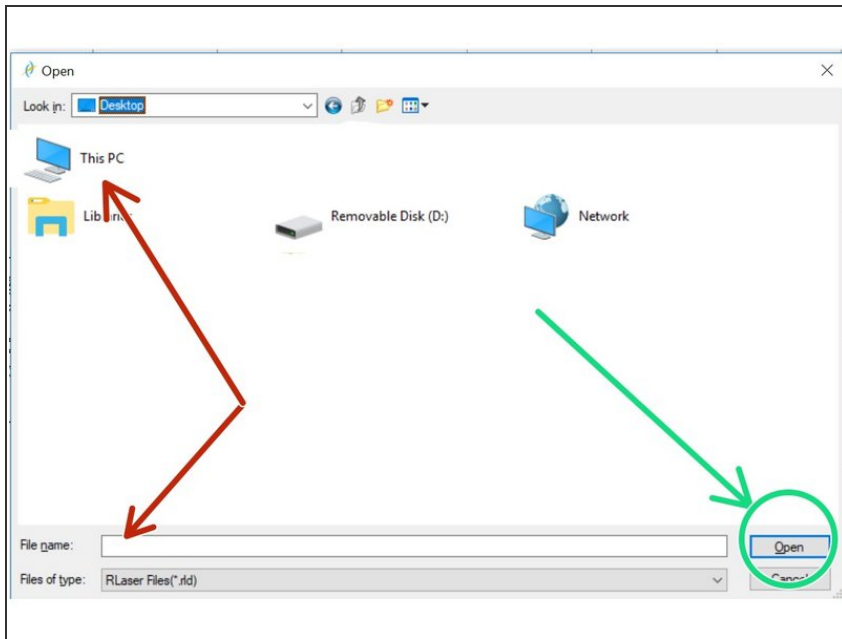


## INTRODUCTION

In this SOP you'll transfer your job from RDWorks to the machine in preparation for cutting. You should already have completed:

- [04 - Laser Cutter Focusing](#)
- [01 - RDWorks Job Setup](#)

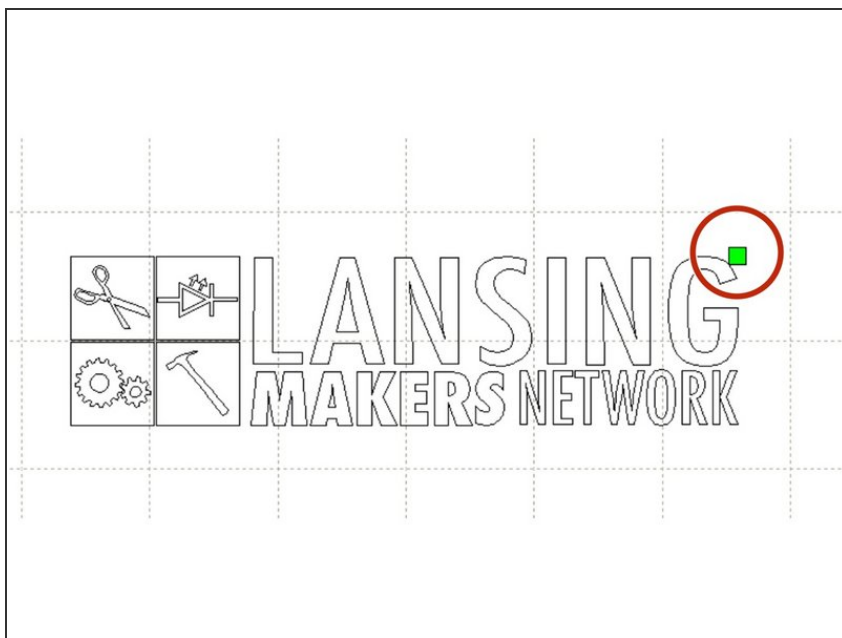
## Step 1 — Open your RLD file (if not already open)



**i** If your file is already loaded into RDWorks, you can safely skip to [step 2](#)

- Click *File* -> *Open* on the menu bar.
- Select your file from the file list.
- Click *Open*.

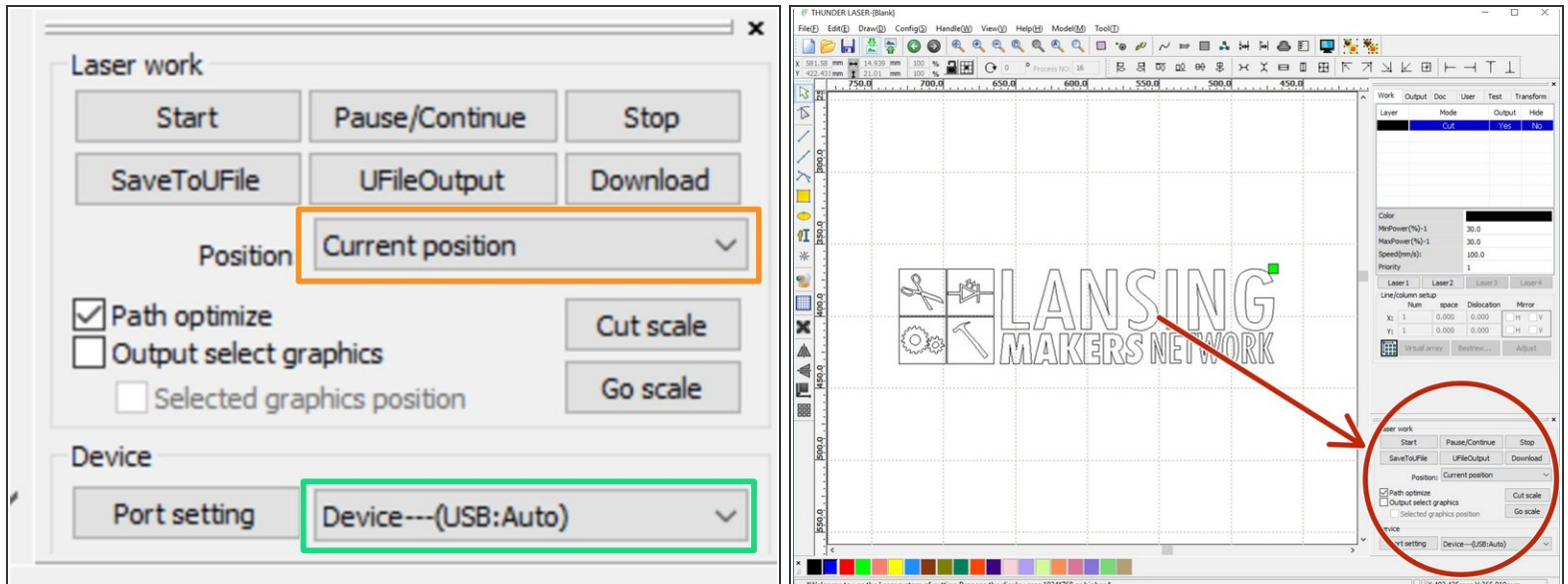
## Step 2 — Confirm Origin



- Confirm that your origin point is set correctly.

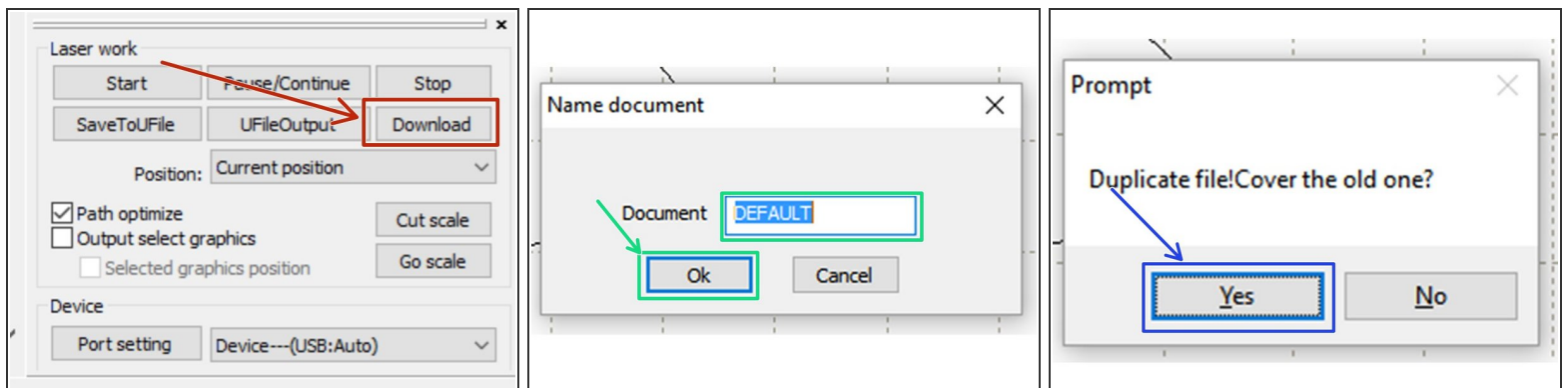
**i** If you need to adjust your origin see: [Setting the origin](#)


## Step 3 — Check Work Settings



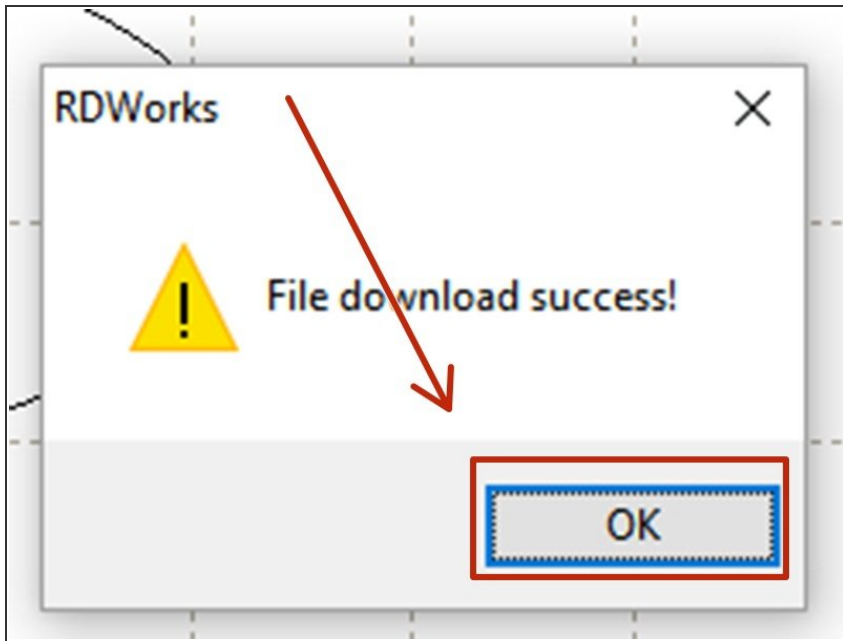
- Locate the "Laser Work" panel in the bottom right hand corner of RDWorks.
- Check that *Position* is set to "Current Position"
- Check the "Device---(USB:Auto)" is selected.

## Step 4 — Download Job to Machine



- Click *Download* in the Laser Work panel.
- When prompted to "Name Document" click "OK" to accept the default name.
-  You're more than welcome to name your document. Documents are purged on a regular basis to keep the machine from slowing down downloads, however.
- When prompted to "Cover the old one?" choose *Yes*

## Step 5 — Download Success



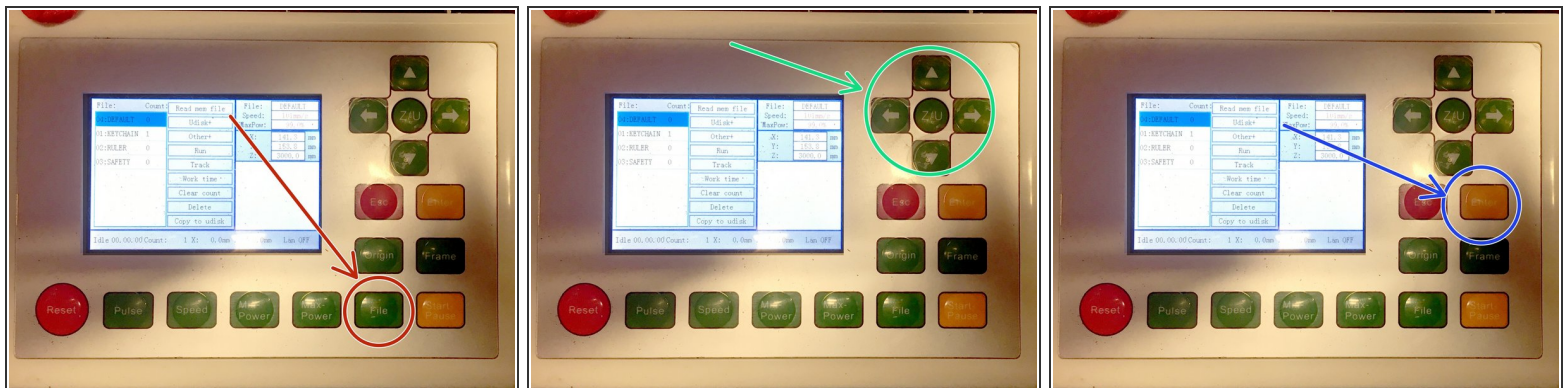
- Click **OK** to close the Download success dialog box.



If your download fails check:

- The machine is on.
- The machine is not currently running a job.
- The USB cable is connected.

## Step 6 — Open the file on the machine



- On the machine controller, Tap the *File* Key
- Use the cursor keys to select your file.
- (If you just downloaded your file, it should be first in the list)
- Press *Enter*
- Your file should be loaded and its preview should display in the LCD screen.

You are now ready to continue to [focusing the laser cutter](#).

This document was generated on 2022-01-26 03:00:23 AM (MST).

