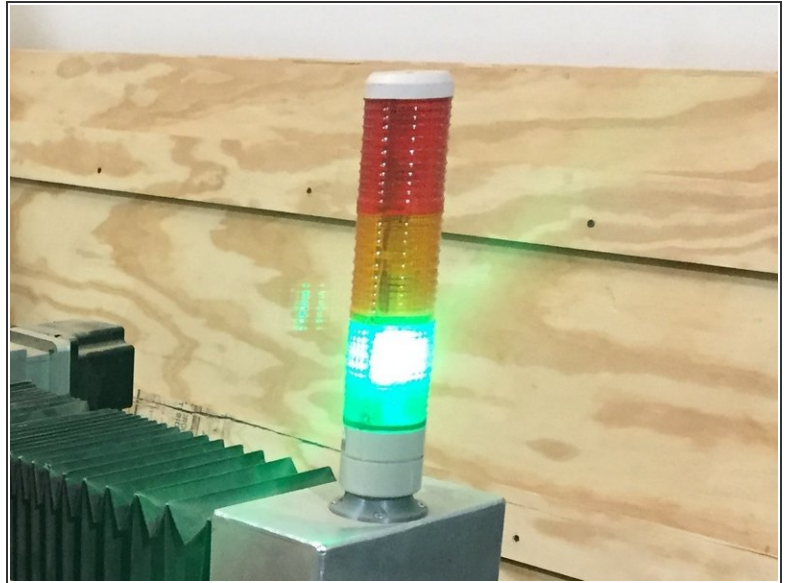


05 - Shutdown

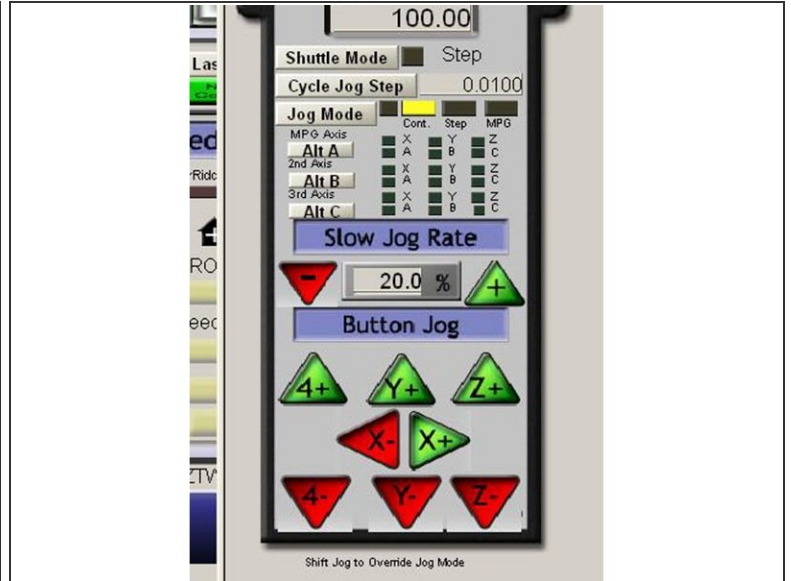
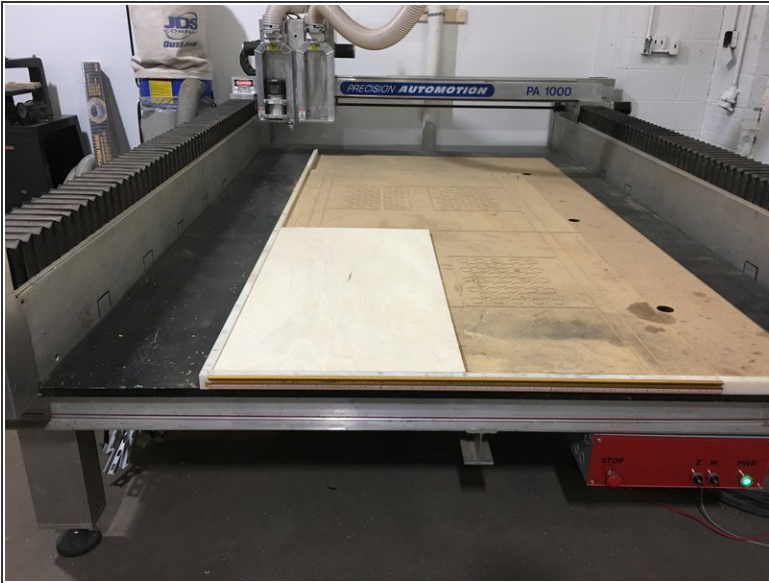


Step 1 — Remove your tool



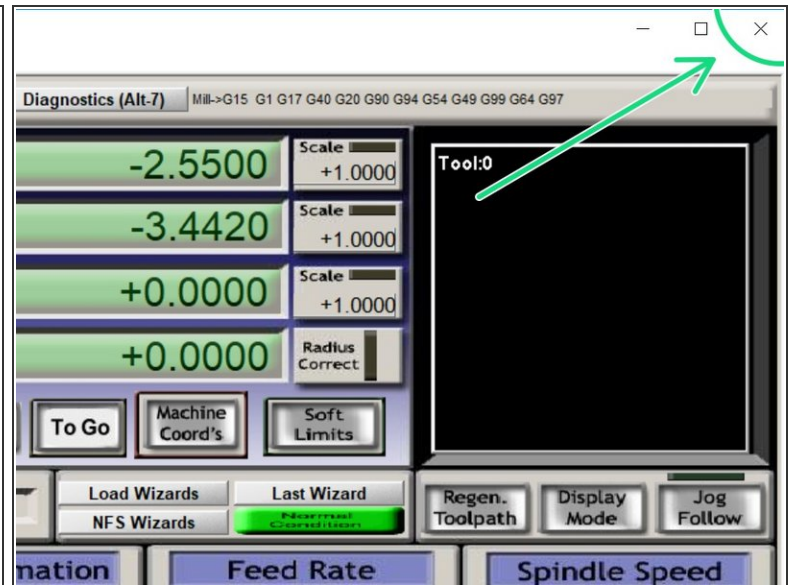
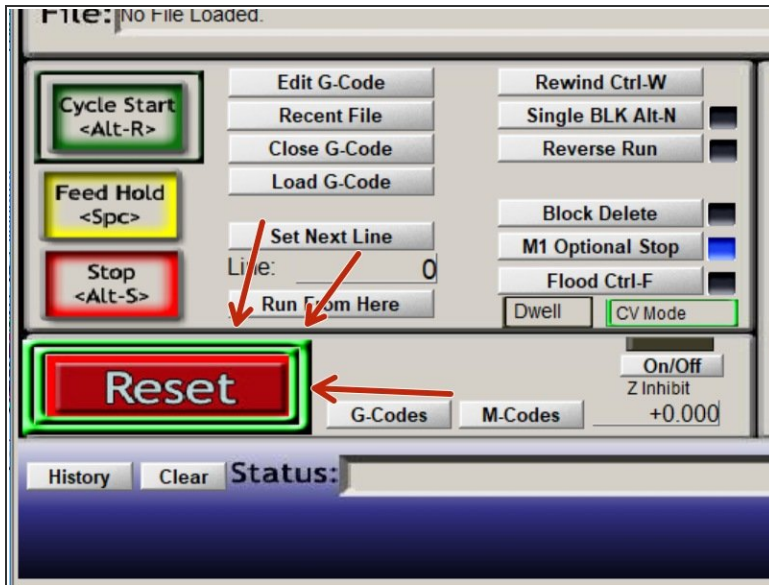
- Follow [03 - Changing Tools](#) to remove your tool, the collet and collet nut from the spindle.
- ⚠ Wait until the "GREEN" light is illuminated on the indicator stalk before working near the spindle.
- Return the tool, collet and collet nut to their appropriate storage locations.

Step 2 — Park the gantry



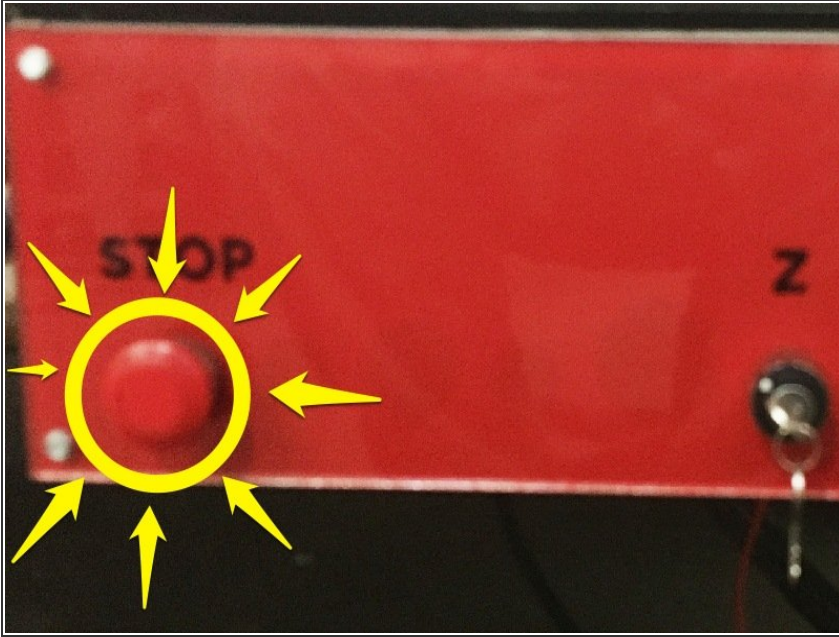
- Jog the gantry toward the rear of the machine to allow room to remove your project from the spoilboard.
- ☑ Leave the gantry parked toward the rear of the machine to allow the next user to install their material without needing to turn on the machine first.

Step 3 — Shutdown Mach3



- Click RESET on Mach3
- Click the "X" to close Mach3
 - When prompted to really shutdown, click "YES"
 - When prompted to save fixtures, click "NO"
- Shutdown windows.
 - The monitor will enter power save on its own. Please don't turn off the monitor.

Step 4 — Shutdown machine



- Push the red STOP button on the control panel to shutdown the machine.
- The button will click in when depressed.
- ⓘ The lights on the indicator stalk and the panel should go out.

Step 5 — Clean up the area



- Return all tools, collets, etc to their correct storage locations.
- Scrape any screw puckers created by your affixing material to the spoilboard.
- Vacuum any debris not caught by the dust collection system.
 - EMPTY the dust collection system if it needs to be emptied.



Leave the area better than when you found it!