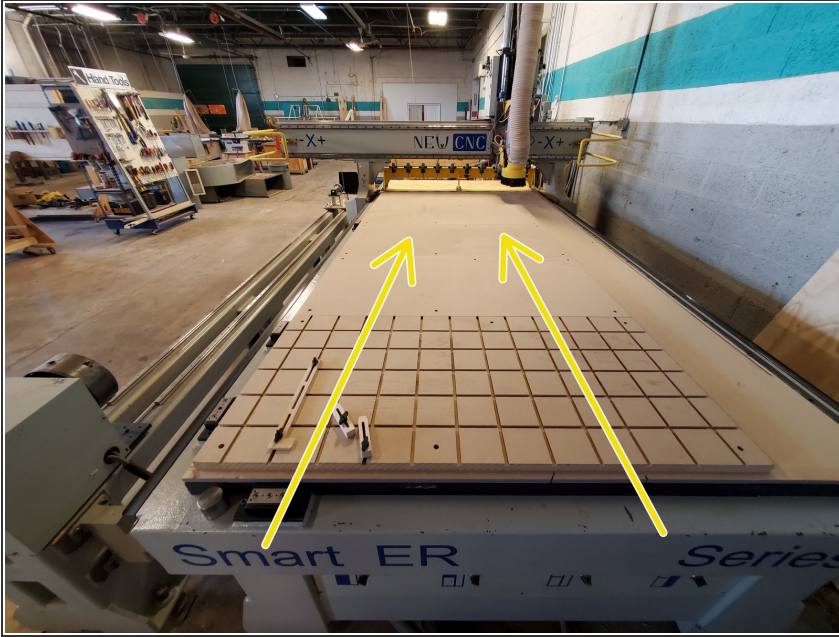


05 - Shutdown

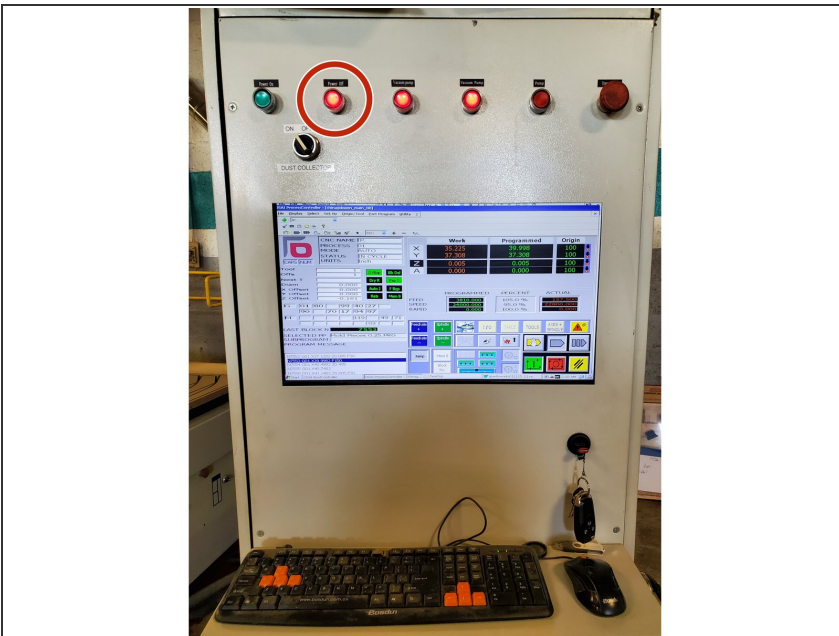


Step 1 — Park the Gantry



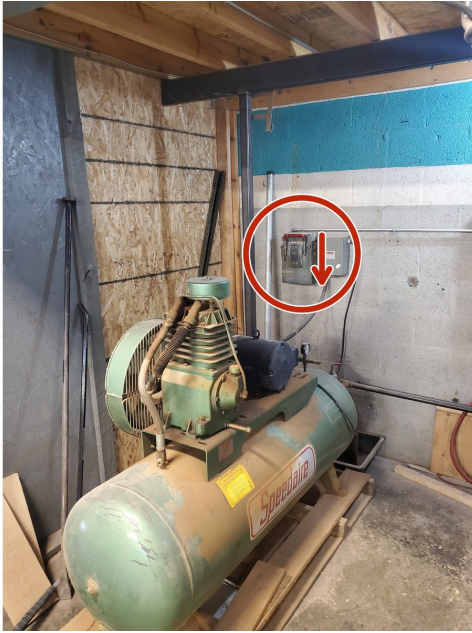
- Jog the gantry toward the rear of the machine to allow room to remove your project from the spoilboard.
- Leave the gantry parked toward the rear of the machine to allow the next user to install their material without needing to turn on the machine first.

Step 2 — Power Down the Machine



- Press the red "Power Off" button in the upper left of the control cabinet.

Step 3 — Turn Off the Air Compressor



- Check that nobody else is using compressed air tools in the wood or metal shop.
- If not, move the air compressor power switch back to "off."
- If so, leave the compressor on.

Step 4 — Clean Up



- Use a shop-vac or brush and dust pans to remove any remaining dust and chips from the area.
- Clean any tape or residue from the spoil board.
- Remove any raised points caused by screws on the spoil board.
- Empty the dust collector if the lower bag is more than half full.
- ☑ Leave the area better than you found it.