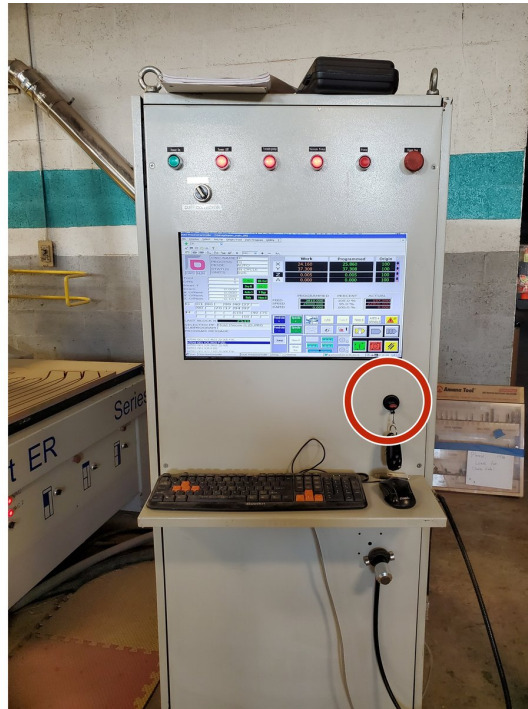


04 - Run a Part Program



INTRODUCTION

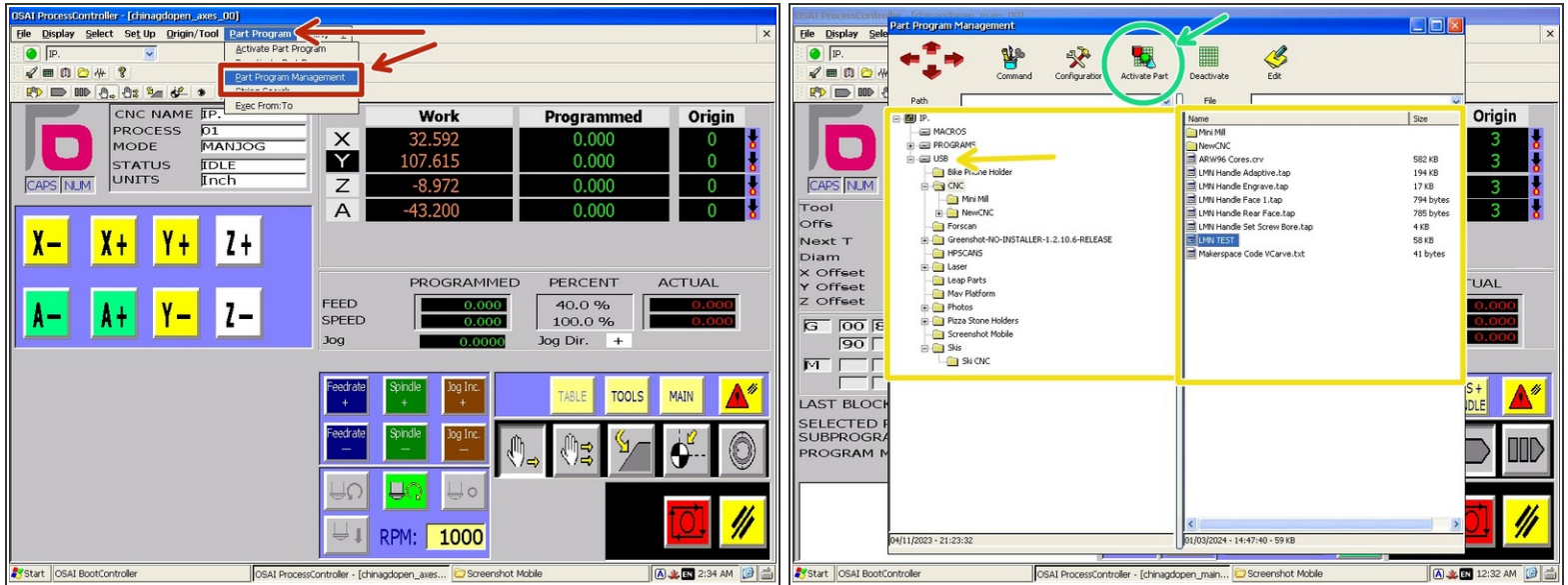
Once you have your G Code program from VCarve, it is ready to run on the machine. This guide explains how.

Step 1 — Move the Part Program to The Controller



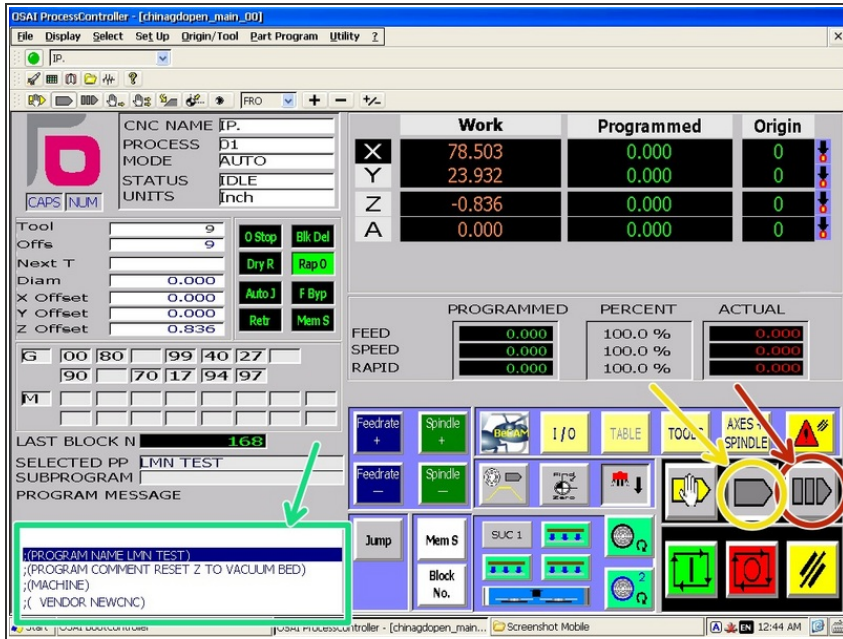
- Export your program from the CAM software to a USB drive.
- Plug your USB into the port on the lower right of the control panel.

Step 2 — Activate the Part Program



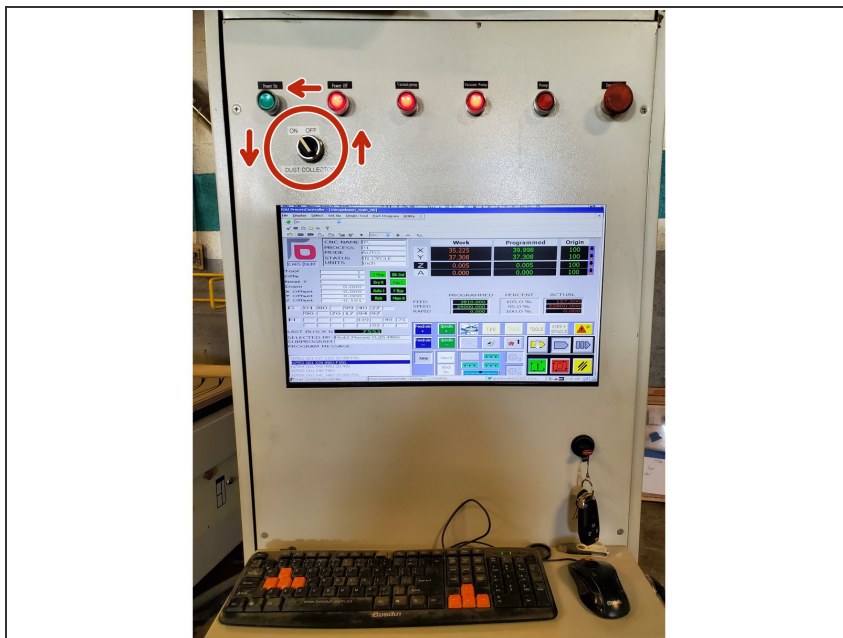
- Click "Part Program" in the top tool bar and select "Part Program Management."
- Navigate to and select the part program. It will be in the "USB" directory.
- Click "Activate Part" to load the program in the controller.
- ❗ Alternately, click "Edit" to open the file in the text editor and manually modify or view the G code.
- Close the Part Program Management Window. Your program name should now appear in the "Selected Part Program" field.

Step 3 — Double Check Tools and Origin



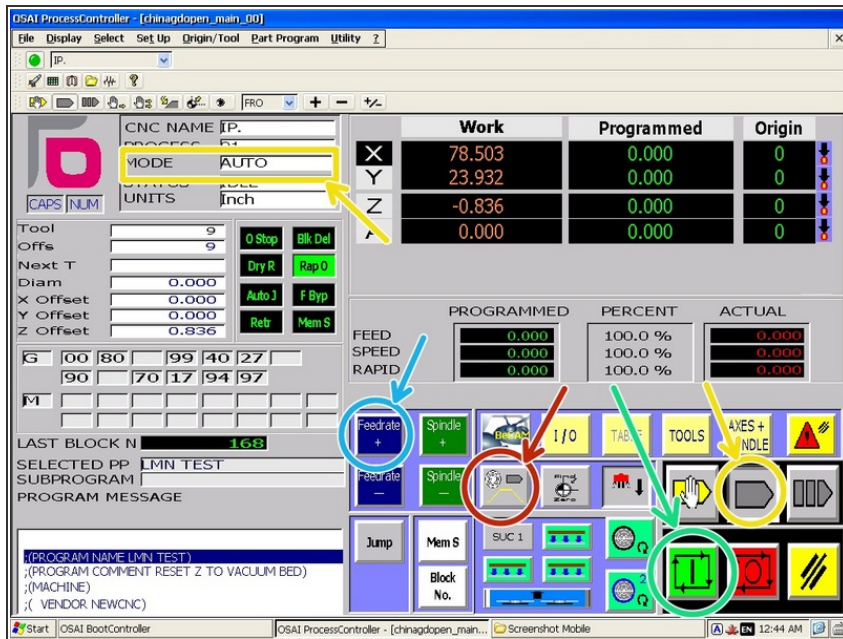
- Click the "Block-by-block Mode" button.
- Use the keyboard up and down keys to navigate between blocks (lines) of code.
- Check that the notes at the top of the program match what you anticipate based on the setup:
- Tools and their numbers match what is actually loaded.
- The origin you set matches the program origin.
- Use the up arrow key to scroll back to the top of the program. Click the "Auto Mode" button.

Step 4 — Turn On Dust Collector



- Use the switch on the control panel to turn on the dust collector.
- Also make sure the vacuum pumps are on and valves open if using vacuum work holding.

Step 5 — Start the Program in Hand Wheel Prove Out Mode



- Click the "Hand Wheel Prove Out Mode" Button.
- Ensure the controller is in "Auto" mode. Click the "Auto Mode" button if not.
- Click "Cycle Start."
- Rotate the hand wheel to slowly proceed through the initial moves of the program.
- If everything looks good, disable hand wheel prove out mode and click "Feedrate +" until the feedrate reaches 100% to continue cutting the part automatically.